



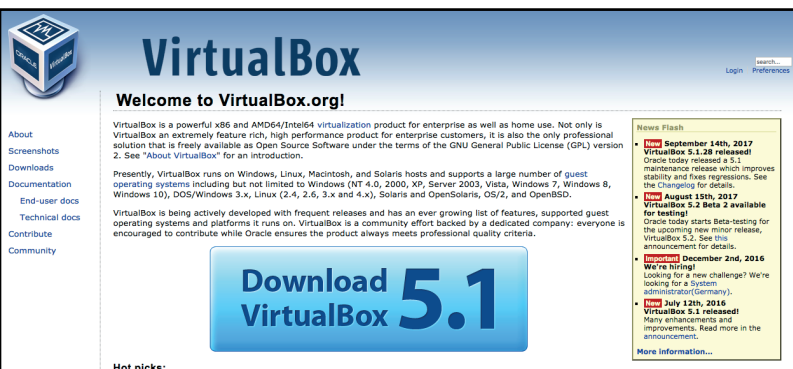
Setting up your ownCloud

Step-by-Step to our ownCloud instance



ownCloud offers customers the software and support to create their very own private, on-premises cloud. No more wondering where your data is stored or who may have unauthorized access to your sensitive information. With ownCloud, IT is able to maintain full control over all of your company's confidential documents, knowing exactly where the data is at all times and deciding who may or may not have access to a certain document or folder.

With this document we want to give you an overview on the first steps on how to get started with your ownCloud Appliance. First of all you need a server. For testing purposes, will create a virtual machine that contains all the packages and functionalities we need. The whole thing isn't complicated and is done in a few steps. In this testing case we used a MacBook Pro with macOS Sierra 10.12.6. But what is important is not the hardware and the operating system, but the virtual environment. Therefore we start with the installation of VirtualBox.



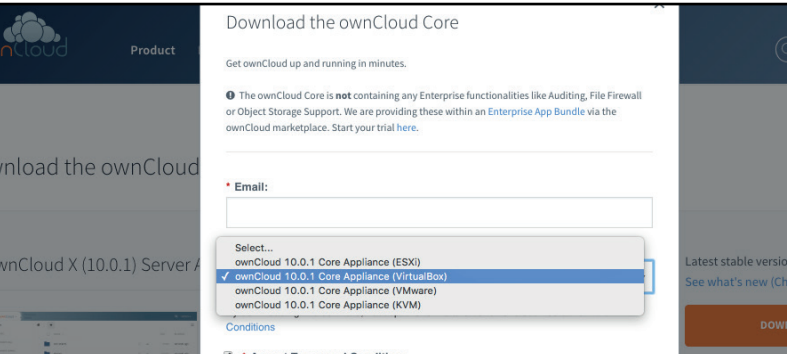
Install VirtualBox

Note: If VirtualBox is already installed, you can skip this step.

Visit the <https://www.virtualbox.org/wiki/Downloads> page and select the appropriate package for your system under VirtualBox (* *) Platform packages. In our case the OS X hosts.

The rest is simple: save, run, and install with the default settings. Finished.

HOW TO INSTALL OWNCLOUD



Download ownCloud Image

Note: If there are problems with the download, please try using another browser.

Visit <https://owncloud.com/en/download/> and click the Download button under ownCloud X (* . *) Server Appliance. A lightbox will open; enter a working e-mail address, choose ownCloud X (* . *) CoreAppliance (VirtualBox) and set a checkmark to Accept Terms and Conditions. The download starts.

Now it's time for a cup of coffee, the image size is over 1GB.



Install Univention-App-owncloud-virtualbox in VirtualBox

When the download is complete, you need to start VirtualBox. The following steps are necessary:

1. Click **File** in the menu bar
2. **Import Appliance**
3. Import Appliance: Click on the folder icon and load the downloaded image from ownCloud page (Univention-App-owncloud-virtualbox.ova) -> Continue
4. Adjust the default settings when needed.
5. **Import**
6. Accept software license by clicking on **Accept**

The import starts.



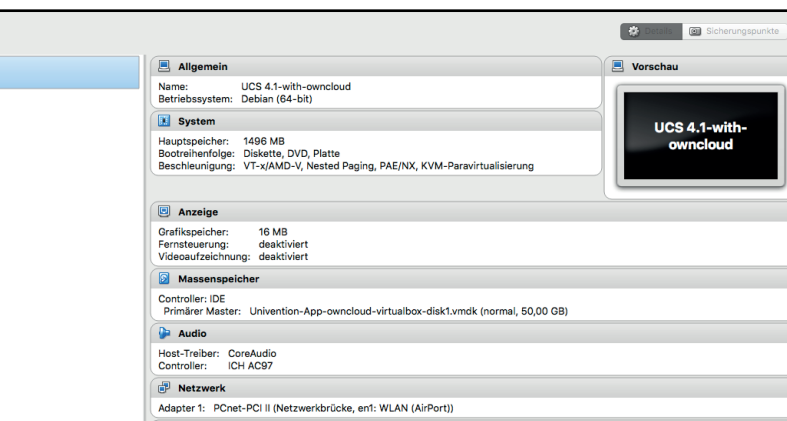
First steps on ownCloud Server

Now select the imported image in the left column and press **Start**. Wait 5 seconds and let the server boot with default settings.

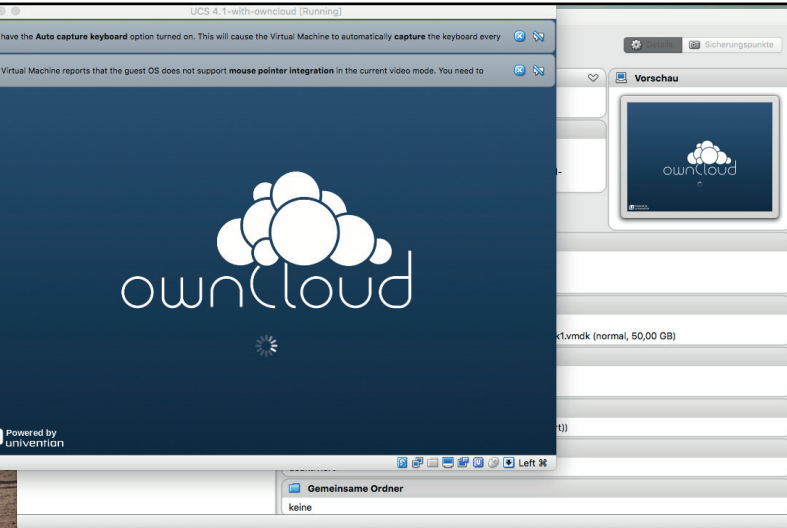
After a short time you will reach the setup. We used the following settings:

Note: The next settings depend on individual factors. If you are unsure, ask your system administrator. Make a note of the values entered in a safe place. Especially the used IP address and the password - we need this later.

1. Choose your language: English / City: Nuremberg -> Next
2. Default system locale: German (Germany) / Time zone: Europe/Berlin / Keyboard layout: English -> Next
3. Domain and network configuration: Obtain IP ad-



HOW TO INSTALL OWNCLOUD



dress automatically (true) / Preferred DNS Server: 192.168.178.1 -> NEXT

4. Domain setup: Manage users and permissions directly on this system -> NEXT

5. Account Information: Your decision. Be sure to use a valid e-mail address and set a strong password with at least 8 characters (12345678 is not a very good choice) -> NEXT

6. Host settings: If you have experience with configuring FQDN and hosts, use your own settings. If not, use the predefined values. -> NEXT

7. Confirm configuration setting: Check the settings, make sure that the checkbox **Update system after setup** is set to true -> CONFIGURE SYSTEM

The virtual machine is now configured. Depending on system performance, this step may take some time. Again: Now is a good time for a cup of coffee. When everything is configured, complete the setup with a click on FINISH.



Note: The virtual machine is ready to set up the users and shared folders now. Your „Cloudserver“ is running in the virtual environment. The machine has to be on-line when you want to use the functionality. In practice, it is a good idea to use your own system for this, or even better, a real server powered on 24/7.

Set up ownCloud

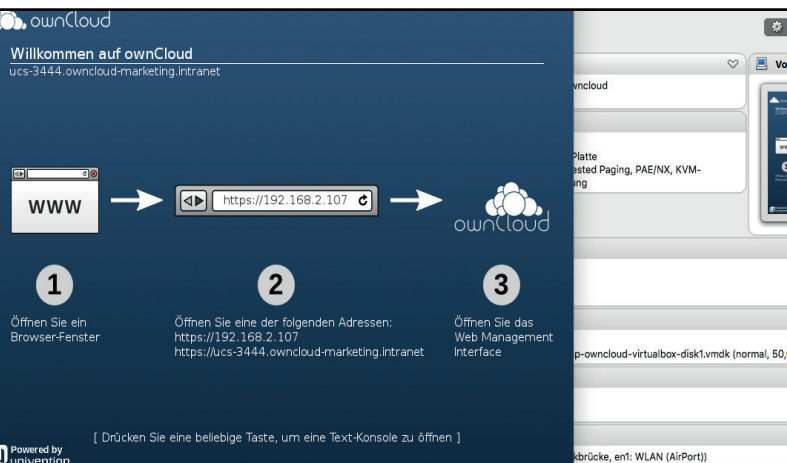
Start your favorite browser and type in the address field of the IP you have configured, for example

`https://192.168.178.37`

(replace my IP with yours - you can find it by taking a look at the virtual machine). We can ignore the message **This is not a secure connection**.

Now we have to license ownCloud. The license file is already present in your e-mail inbox.

1. Open the e-mail
2. Save the license file in a secure location
3. Click on **Upload Licence Data**
4. Activation successful -> FINISH



Set up User

Note: It is recommended to document important settings and store them in a safe place. In the following, we create users - write down the entered data and use secure passwords. In any case these passwords should differ and also be individual from the administrator password.

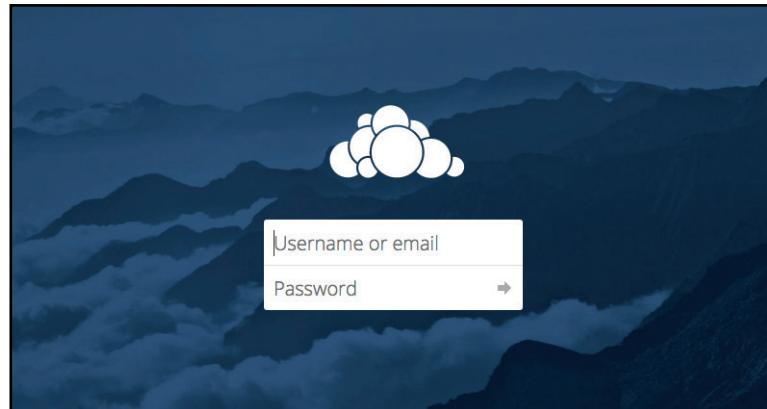
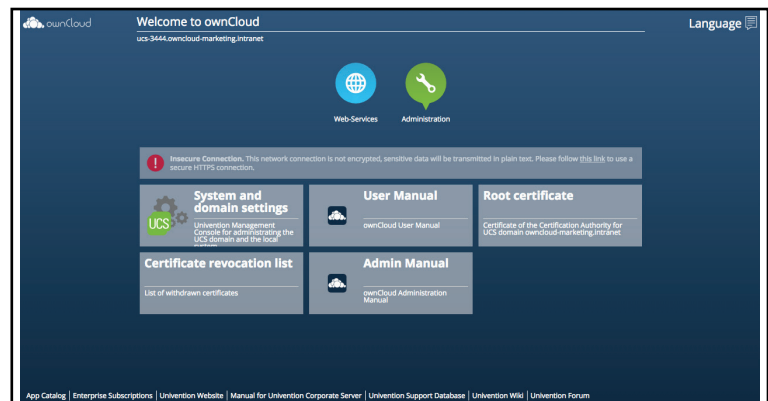
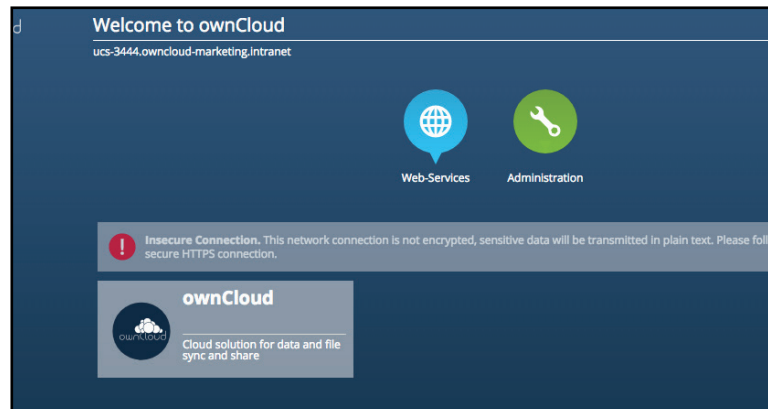
1. Under **Administration**, click **System and domain settings**.
2. „User Name: Administrator“ - „Password: noted password
3. User: Add / Now create the users who have access to this ownCloud. You can set the checkbox next to **Change Password for next login** to true. This gives users the opportunity to create their own password. Please do not ignore the password checks - this ensures a basic complexity and thus a secure new password.

Test Your ownCloud with Client and Web Interface.

Visit <https://owncloud.com/download/> and download the client for your system under ownCloud Desktop Clients. In our case, this is the ownCloud Mac OS X Client.

Like before: After successfully saving, run and install with default settings. Then do the following steps:

1. Run the program
2. Connect with ownCloud: Under **Server Address** enter the IP you have configured as in the browser. In our test case <https://192.168.178.37>
3. **Untrusted certificate:** We put the checkmark at **Trust this certificate anyway** and confirm with **OK**
4. Enter a valid **User Name** and the given **Password**.
5. The settings are individual. The default settings can be accepted safely.
6. **Open local folder:** You now see the ownCloud root directory. Test whether everything works by simply creating a new folder and placing any file in there. Go back to your favorite browser and, if not already open, enter the IP you have configured (<https://192.168.178.37>). Now click on ownCloud under **Applications**. Log on with the same username as in the desktop client. If everything works fine, you should already see the previously created folder. In addition, you can keep



track of the events in the synchronization protocol of the desktop client.

Congratulations! You have installed your own secure cloud solution.

Connect to the ownCloud marketplace

Extend your ownCloud instance with a variety of apps, either provided by ownCloud or by one of our publishers out of the ownCloud community. You can connect to the ownCloud marketplace easily with the market app within your ownCloud instance.

Go to marketplace.owncloud.com, register your account and get your API key.

You will find further instructions within the ownCloud marketplace.

Try ownCloud Enterprise

Now that you have your ownCloud instance up and running you can extend it even more with Enterprise functionalities.

The ownCloud Enterprise App Bundle contains functionalities like Auditing, the ownCloud File Firewall or Workflows. You can find an overview on all Enterprise Apps here:

https://marketplace.owncloud.com/bundles/enterprise_apps

All Enterprise apps can be tested for 30 days:

<https://marketplace.owncloud.com/enterprise-trial>

If you want to continue using the Enterprise functionalities after the trial period, simply reach out to our [sales team](#) and you can continue working within your fully staffed ownCloud Enterprise.

Known Issue in the iOS App

For the iOS app, it is not enough to use the configured IP (<https://192.168.178.37>) to connect to the server.

The address you have to use can be found in the ownCloud client by looking at the tab of a connected user.

In my case this sounds like: „Verbunden mit <https://192.168.178.37/owncloud>“. The /owncloud addition is necessary to get a successful connection.

2. Connect your ownCloud to the Marketplace

Go to the market app inside your ownCloud. Click on „Add API key“ and paste your personal API key:

`3202b333f0301781fb7615801225da8df56965ff8bf83aebbd71d4e86e9021cd` 

3. Start the Trial in your ownCloud Market App

In the Market App, click the "Start Enterprise Trial" button and install the Enterprise Apps.

Note: Since ownCloud X (10.0) the Market App is installed by default. For details see [Market App detail page](#).

About ownCloud

Organizations that must share confidential data internally and externally rely on ownCloud's on-premises enterprise file sync and share platform. Only ownCloud gives IT the visibility and control required to manage sensitive data, preserve business processes, and integrate with existing compliant infrastructures while offering users the modern collaboration experience they demand. This is made possible through ownCloud's open, modular architecture, extreme extensibility and unique federated cloud sharing capabilities.

For more information, visit: <https://owncloud.com>.

ownCloud GmbH
Rathsbergstrasse 17
90411 Nürnberg

Contact:
owncloud.com/contact
Telefon: +49 911 14888690
owncloud.com

@ownCloud
facebook.com/owncloud
gplus.is/owncloud
linkedin.com/company/owncloud